

Human Placenta-Derived Mesenchymal Stem Cells and Islet-Like Cell Clusters Generated From These Cells as Novel Sources for Stem Cell Therapy in Diabetes

Sachin Kadam¹, Sudhakar Muthyala²,
Prabha Nair², and Ramesh Bhonde³

¹ National Center for Cell Science, Ganeshkhind, Pune 411007, MS, India. ² Division of Tissue Engineering and Regeneration Technologies, BMT Wing, Sree Chitra Tirunal Institute for Medical Sciences and Technology, Poojappura, Thiruvananthapuram 695012, Kerala, India. ³ Stempeutics Research Malaysia SDN BHD, Technology Park Malaysia, Bukit Jalil, 57000 Kuala Lumpur, Malaysia.
Address correspondence to: Ramesh Bhonde, e-mail: rrbhonde@stempeutics.com.my

Manuscript submitted July 7, 2010; resubmitted July 25, 2010; accepted August 2, 2010

■ Abstract

Placental tissue holds great promise as a source of cells for regenerative medicine due to its plasticity, and easy availability. Human placenta-derived mesenchymal stem cells (hPDMSCs) have the potential to differentiate into insulin-producing cells. Upon transplantation, they can reverse experimental diabetes in mice. However, it is not known whether culture-expanded undifferentiated hPDMSCs are capable of restoring normoglycemia upon transplantation in streptozotocin (STZ)-induced diabetic mice. Hence we prepared long-term cultures of hPDMSCs from the chorionic villi of full-term human placenta. Flow cytometry analyses and immunocytochemistry study revealed bonafide mesenchymal nature of the isolated hPDMSCs. These cultures could differentiate into adipogenic, osteogenic, chondrogenic, and neuronal lineages on exposure to lineage-specific cocktails. Furthermore, we showed that hPDMSCs can form islet-like cell clusters (ILCs) on stepwise exposure to serum-

free defined media containing specific growth factors and differentiating agents. qRT-PCR showed the expression of insulin, glucagon, and somatostatin in undifferentiated hPDMSCs and in ILCs. Differentiated ILCs were found to express human insulin, glucagon, and somatostatin by immunocytochemistry. Additionally, ILCs also showed abundance of pancreatic transcription factors *ngn3* and *isl1*. Both undifferentiated hPDMSCs and ILCs exhibited insulin secretion in response to glucose. Transplantation of hPDMSCs or ILCs derived from hPDMSCs in STZ-induced diabetic mice led to restoration of normoglycemia. Our results demonstrate, for the first time, reversal of hyperglycemia by undifferentiated hPDMSCs and ILCs derived from hPDMSCs. These results suggest human placenta-derived MSCs as an alternative source for cell replacement therapy in diabetes.

Keywords: human placenta-derived stem cell · diabetes · mesenchymal stem cell · transplant · beta-cell · islet · differentiation · macrocapsule · immunoisolation

Introduction

Diabetes mellitus is becoming one of the main threats to human health in the 21st century [1]. The global prevalence of diabetes is shifting significantly from the developed countries to the developing countries [2]. Beta-cell replace-

ment is an effective treatment for type 1 diabetes, but its applicability is limited by the lack of sufficient donor tissue, raising the need for alternative tissue sources. Human embryonic stem cells (hESCs) have received much attention in the last few years because of their promise as a renewable source of tissue for beta-cell differentiation [3].



However, ethical issues surrounding the use of hESCs limit its use in clinical application of cell replacement therapy. Also, tissue-resident stem cells have demonstrated self-renewal and multipotent differentiation potential, which could be of great value for the successful progress of cellular therapies for diabetes.

The placenta is a temporary organ that accompanies pregnancy connected to the fetus via the umbilical cord. Besides playing a fundamental and essential role in fetal development, nutrition, and tolerance, placenta may also represent a reserve of progenitor/stem cells. Recently, the placenta was shown to be an important hematopoietic organ, containing cells in chorionic villi that showed hematopoietic cell lineage differentiation along with presence of the hematopoietic markers CD34 and CD45 [4]. In addition to hematopoietic stem cells, the placenta has been reported to contain a population of multipotent stem cells exhibiting some of the characteristics of pluripotent ESCs including expression of stem cell markers c-kit, Thy-1, oct-4, SOX2, hTERT, SSEA-1, SSEA-3, SSEA-4, TRA-1-60, and TRA-1-81 [5]. These cells resemble mesenchymal stem cells and can be induced to differentiate into hepatocyte, vascular endothelial, cartilage, and neural-like cells [5-16]. Differentiation of these human placenta-derived mesenchymal stem cells (hPDMSCs) into insulin positive cells [17, 18] has raised hopes for the use of these cells as an alternative source for cell therapy in diabetes.

It is known that Insulin is the only gene that is imprinted exclusively in the yolk sac placenta [19]. The yolk sac placenta and the pancreas of both human and mouse are the only tissues that produce insulin [20-22]. Rodent yolk sac is a known major source of insulin imprint [19, 20, 23], which starts by day 14.5 [24]. This suggests that yolk sac placental imprinting of insulin is an ancestral trait [25]. However, mechanisms for regulating insulin gene expression in placental tissue differ from those in pancreatic beta-cells [23].

Based on these findings, we hypothesized that hPDMSCs retaining imprinted insulin may act as surrogate beta-cells. Therefore, we supposed it is likely that transplantation of hPDMSCs under the kidney capsule of experimental diabetic mice may help to reduce hyperglycemia through insulin secretion. MSCs from bone marrow and placenta share similar characteristics, and possess immunomodulatory properties. Both have been found suitable for allogeneic stem cell therapy eliminating the need of immunosuppression [26].

In the present study, we demonstrate long term maintenance of hPDMSCs in a medium supple-

Abbreviations:

alpha-MEM - alpha minimal essential medium
 CD34 - cluster of differentiation 34 (surface glycoprotein, mediates attachment of stem cells to bone marrow)
 CD45 - cluster of differentiation 45 (surface glycoprotein expressed on almost all hematopoietic cells)
 c-kit - cytokine receptor (also called CD117; expressed on hematopoietic stem cells; binds to stem cell factor)
 Ct - cycle threshold
 DAPI - 4',6-diamidino-2-phenylindole
 DMEM - Dulbecco's modified eagle medium
 DTZ - diphenylthiocarbazon
 EDTA - ethylenediaminetetraacetic acid
 ELISA - enzyme-linked immunosorbent assay
 ESC - embryonic stem cell
 FACS - fluorescence-activated cell sorting
 FAM - 6-carboxyfluorescein
 FITC - fluorescein isothiocyanate
 GLP-1 - glucagon-like peptide 1
 HEPES - 4-(2-hydroxyethyl)-1-piperazineethanesulfonic acid
 hESC - human embryonic stem cell
 hPDMSC - human placenta-derived mesenchymal stem cell
 hTERT - human telomerase reverse transcriptase
 hUCBS - human umbilical cord blood serum
 ILC - islet-like cell cluster
 IPGTT - intra-peritoneal glucose tolerance test
 IPN - inter-penetrating network
 Isl1 - insulin gene enhancer protein gene 1
 ITS - insulin-transferrin-selenium
 KRBH - Krebs' ringer bicarbonate HEPES
 L15 medium - Leibovitz medium 15
 Map2 - microtubule-associated protein 2 (involved in neurogenesis)
 MGB - dihydrocyclopyrroloindole tripeptide minor groove binder
 MSC - mesenchymal stem cell
 NCCS - National Centre for Cell Science
 Ngn3 - neurogenin 3
 NeuN - neuronal nuclei (neuron-specific protein)
 Oct4 - octamer binding transcription factor 4 (transcription factor expressed by embryonic stem cells)
 PBS - phosphate buffered saline
 Pdx1 - pancreatic and duodenal homeobox gene 1
 PE - phycoerythrin (fluorescent dye for labeling antibodies)
 qRT-PCR - quantitative real-time polymerase chain reaction
 RNA - ribonucleic acid
 PU-PVP - polyurethane-polyvinylpyrrolidone
 SFM - serum-free medium
 Sox2 - sex determining region Y box 2 (transcription factor essential for self-renewal of embryonic stem cells)
 SSEA-1 - stage-specific embryonic antigen-1 (antigenic epitope of undifferentiated cells)
 SSEA-3/4 - stage-specific embryonic antigen-3/4 (expressed on human embryonic stem cells)
 STZ - streptozotocin
 Thy-1 - thymocyte antigen (also called CD90; surface protein of stem cells and mature neurons)
 TPVG - trypsin phosphate versene glucose
 TRA-1-60 - tumor rejection antigen 1-60 (expressed on human pluripotent stem cells)
 TRA-1-81 - tumor rejection antigen 1-81 (expressed on human pluripotent stem cells)
 Tx - transplantation



mented with human umbilical cord blood serum (hUCBS), and confirm multilineage differentiation potential of hPDMSCs. Also, we show that culture-expanded, undifferentiated hPDMSCs, and islet-like cell clusters (ILCs) generated from hPDMSCs, are capable of restoring normoglycemia when transplanted into STZ-induced diabetic mice.

Materials and methods

The work was conducted following the approval from the National Centre for Cell Science (NCCS) Institutional Ethical Committee.

Sample collection

Human placenta of segment cesarean section deliveries of full term pregnancies were collected after informed written consent of the parents. Abnormal placentas showing retrogradation and calcification, and those from proven gestational diabetes, were excluded from the study. Collected placenta tissue was stored aseptically and transported at ambient temperature to the lab in L15 collection medium containing antibiotics (penicillin 200 U/ml and streptomycin 200 µg/ml, Sigma Aldrich, St. Louis, MO, USA).

Isolation and expansion of human placenta-derived mesenchymal stem cells (hPDMSCs)

A total of 32 placentas were screened for isolation of MSCs. Isolation of hPDMSCs was carried out as per the protocol described by Miao *et al.* [12]. The chorionic plate of each placenta was exposed by stripping off the amnion. This chorionic plate was then washed with phosphate buffer saline pH 7.2 (PBS) to remove traces of cord blood. Placental tissue was cut into smaller pieces using sterile scissors. The pieces of placenta were digested with 0.25% trypsin-EDTA (Sigma, St. Louis, MO, USA) for 30 min at 37°C on magnetic stirrer (REMI, India). The digest was then centrifuged at 1000 rpm (Eppendorf 5810R, Hamburg, Germany) to separate the cells. The cells were washed three times with PBS, and finally collected by centrifugation (1000 rpm). Cell pellet was suspended in alpha-minimal essential medium (α -MEM, Invitrogen, Carlsbad, CA, USA), supplemented with penicillin (100 units/ml), streptomycin (100 µg/ml), and 10% hUCBS. Then, the cells were cultured at 37°C in a CO₂ incubator (Forma Scientific Inc., Ohio, USA) gassed with 5% CO₂ and 95% humidity.

Medium was changed every 48 h and replenished with α -MEM supplemented with 10% hUCBS. Cells were first passaged after 21-25 days, and again every 7th day. Cell growth was analyzed by direct cell count to determine the log, lag, and stationary phases. For this purpose, the cells were seeded onto 12 well tissue culture dish at a density of 5×10^3 cells/cm². Viable cells were counted every 48 h using the trypan blue dye exclusion test.

Characterization of isolated cells using immunocytochemistry and flow cytometry

The cells from early passages [4-6] were used for characterization studies. Cells were grown in monolayers on coverslips, and were fixed using 4% paraformaldehyde. The cells were then permeabilized using 50% methanol for 5 min, followed by blocking using 5% bovine serum albumin (BSA) in PBS for 1 h. The cells were then exposed to nestin, vimentin, desmin, smooth muscle actin, Ki 67, oct-4, and SSEA4 primary non-labeled mouse anti-human antibodies (1:100 dilutions, Chemicon, Temecula, CA, USA) for 12 h at 4°C, followed by respective secondary antibodies (Invitrogen, Carlsbad, CA, USA) for 1 h at 37°C. The coverslips were mounted in mounting medium containing antifade (Vectashield, Vector Laboratory, Burlingame, CA, USA) and 4',6-diamidino-2-phenylindole (DAPI). The slides were then viewed using confocal laser scanning microscope (Zeiss LSM510). DAPI (Invitrogen, Carlsbad, CA, USA) was used for nuclei visualization.

The cells from passages 4-6 were dislodged using 0.05% trypsin and 0.02% EDTA in PBS, and resuspended in α -MEM. Then, the cells were fixed in chilled 70% ethanol, and incubated in mouse anti-human FITC/PE conjugated antibodies against CD29, CD33, CD34, CD44, CD45, CD73, CD90, CD105, and CD117 (1:100 dilution) for 1 h on ice (all antibodies were purchased from Becton Dickinson, San Diego, CA, USA). Finally, the cells were counted using a flow cytometry laser 488 nm, and the data were analyzed using BD Cellquest Pro software.

Induction of adipogenic, chondrogenic, osteogenic, and neuronal differentiation

Human PDMSCs at passage 3 were fed with alternate cycles of adipogenic induction medium (PT-3102B Cambrex, Walkersville, MD, USA) and adipogenic maintenance medium (PT-3102A Cambrex, Walkersville, MD, USA). Adipogenesis was

**Table 1.** Sequential addition of pancreatic growth factors for pancreatic lineage differentiation

Differentiation day	Medium composition	Cell structure
2	α -MEM + 10% hUCBS	Adhered cells
0 (SFM-i)	α -MEM + 1% BSA + 1x ITS	Single cells (after trypsinization)
3 (SFM-ii)	α -MEM + 1% BSA + 1x ITS + 0.3 mM taurine	Loose cell clusters
7 (SFM-iii)	α -MEM + 1.5% BSA + 1x ITS + 3 mM taurine + GLP-1 + nicotinamide	Floating cell clusters
10 (SFM-iii)	α -MEM + 1.5% BSA + 1x ITS + 3 mM taurine + GLP-1 + nicotinamide	Pancreatic hormone-producing ILCs

Legend: SFM: serum-free medium. α -MEM: alpha minimal essential medium. hUCBS: human umbilical cord blood serum. BSA: Bovine serum albumin. ITS: insulin-transferrin-selenium. GLP-1: glucagon-like peptide 1. ILC: islet-like cluster.

induced as per the manufacturer's instruction. Adipogenesis was confirmed using Oil Red O staining.

For chondrogenic, osteogenic, and neuronal differentiation, 3×10^3 hUCMSCs/cm² were plated onto tissue culture flasks. Cells were allowed to adhere to culture surface for 24 h at 37°C. Chondrogenic, osteogenic, and neuronal lineages were induced by replacing the growth medium (α -MEM) with chondrogenic, osteogenic, and neuronal differentiation bullet kit (PT-3003, PT-3002, and CC-3229 respectively Cambrex, Walkersville, MD, USA) respectively, as per manufacturer's instructions. Chondrogenesis was confirmed using Safranin-O staining; osteogenesis by staining with Alizarin Red S, while neuronal differentiation was confirmed by immunostaining with neuron-specific markers Map2 and NeuN (Chemicon, Temecula, CA, USA).

Differentiation to islet-like clusters (ILCs)

Differentiation was carried out in three stages, as indicated in Table 1. To induce differentiation, undifferentiated hPDMSCs from T75 culture flasks (BD Falcon, Franklin Lakes, NJ, USA) were trypsinized and reseeded at cell density 1×10^6 cells/cm² in SFM-i and plated on ultralow attachment tissue culture plates (Corning, Fisher Scientific International, Hampton, NH, USA). SFM-i contained α -MEM with 17.5 mM glucose, 1% BSA Cohn fraction V, fatty acid free (Sigma-Aldrich, St. Louis, MO, USA), 1x insulin-transferrin-selenium (ITS) (5 mg/l insulin, 5 mg/l transferrin, 5 mg/l selenium, Sigma Aldrich, St. Louis, MO, USA). The cells were cultured in this medium for 2 days. On

the third day, the medium was changed to SFM-ii, which contained α -MEM with 17.5 mM glucose, 1% BSA, ITS, and 0.3 mM taurine. The cell aggregates were cultured in this medium for another 4 days, and shifted to SFM-iii on the seventh day. SFM-iii contained α -MEM with 17.5 mM glucose, 1.5% BSA, ITS, 3 mM taurine, 100 nM glucagon-like peptide (GLP)-1 (amide fragment 7-36;), and 1 mM nicotinamide. The cell aggregates were fed with fresh SFM-iii every 2 days for further 4 days. All chemicals were purchased from Sigma Aldrich, St. Louis, MO, USA, unless indicated otherwise.

This three step protocol, developed by our group, is well proven for differentiation of ILCs from mesenchymal stem cells derived from human umbilical cord and amnion [27, 28].

Characterization of ILCs using diphenylthiocarbazone (DTZ) staining

Specificity of ILCs was determined by diphenylthiocarbazone (DTZ) staining. ILCs were incubated with 10 μ l DTZ stain for 1 h at 37°C, and viewed under inverted phase contrast microscope (Olympus IX 70, Tokyo, Japan).

Assessment of hPDMSCs and ILCs for the presence of pancreatic hormones and transcription factors

ILCs and hPDMSCs pellets were homogenized and frozen in Trizol (Invitrogen, Carlsbad, CA, USA). RNA was isolated according to the manufacturers' instruction, measured on ND-1000 spectrophotometer (Nano-Drop Technologies, Wilmington, DE, USA), and subjected to reverse transcrip-

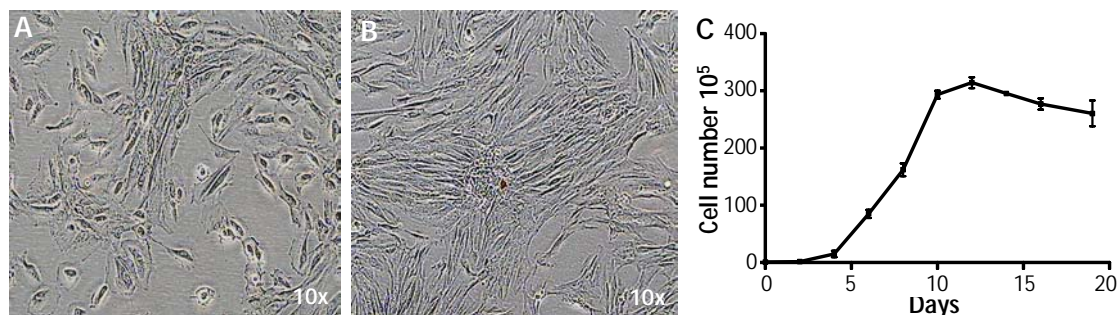


Figure 1. A: hPDMSCs exhibiting mixed population of epithelial cells and fibroblast-like cells at initial passages (0 to 2). At later passages, they exhibited fibroblast-like cell appearance only (B). Growth analysis of these cells showed a mean doubling time of 21.84 h (C).

tion using a high capacity cDNA archival kit (Applied Biosystems, Foster City, CA, USA). Quantitative real-time PCR (qRT-PCR) was performed using TaqMan based assay-on-demand (AoD) from Applied Biosystems. Target genes were detected with FAM-MGB probes, while VIC-MGB 18S were used in duplex/single-plex on a 7500 FAST real time PCR system (Applied Biosystems, Foster City, CA, USA). Real time PCR was performed in 5 μ l total volume in 96-well plates, using cDNA prepared from 100 ng equivalent total RNA. All qRT-PCR data was normalized to 18S rRNA, and carried out in duplex/single-plex reaction to correct for any differences in RNA input in each well.

All values are represented as cycle threshold (Ct) values. Ct values are inversely proportional to the amount of target nucleic acid in the sample (i.e. the lower the Ct level the greater the amount of target nucleic acid in the sample). Samples with a Ct value of 39 and above have no target gene expression. In an ideal PCR reaction, the number of target molecules doubles in each PCR cycle. Therefore, a difference of 1 in the Ct value corresponds to a concentration difference of 2. For comparative purposes, fold difference over the detectable Ct value (i.e. < 39) was calculated for each target gene, and was compared with ILCs and undifferentiated hPDMSCs.

Insulin release and C-peptide assay

100 ILCs were handpicked and incubated with 200 μ l Krebs-Ringer bicarbonate buffer (pH 7.4) supplemented with 10 mM/l HEPES (now called KRBH) and 5.5 mM glucose at 37°C for 1 h. Supernatant was collected and stored at -80°C. Then, ILCs were transferred to KRBH supplemented

with 16.5 mM glucose. Similarly, undifferentiated hPDMSCs were exposed to basal and stimulated glucose solution in KRBH. After incubating them for 1 h at 37°C, the supernatant was collected and stored at -80°C. Secreted insulin was quantified using insulin ELISA kit (Merckodia, AB, Sweden). For stage-specific C-peptide assay during ILC development, conditioned medium was collected at each time point from all experimental groups. The medium was quantified using ultra-sensitive C-peptide human and mouse ELISA kit (Merckodia, AB, Sweden).

Induction of diabetes in Balb/C mice

Balb/C male mice aged 6 to 8 weeks were obtained from an inbred colony maintained at the experimental animal facility of the National Centre for Cell Science (NCCS), Pune, India. Animals were housed under controlled conditions of light (12 h of light and 12 h of darkness), temperature (24°C) and humidity (50%). Mice were maintained on normal chow and water. Experimental protocols were approved by the NCCS Animal Ethical Committee.

After 6-8 h of fasting, mice were injected i.p. with freshly prepared STZ (Sigma Aldrich, St. Louis, MO, USA) at a dose of 200 mg/kg body weight in chilled citrate buffer (pH 4.5). Blood from the tail veins of 6-8 h fasted mice, were assessed for blood glucose (BG) concentrations (Accutrend Sensor Comfort blood glucose meter, Roche Diagnostic, Germany) at 24 h intervals to confirm the diabetic status of the animals. Body weights were recorded at the same time. Mice showing BG more than 300 mg/dl were consistently considered diabetic.

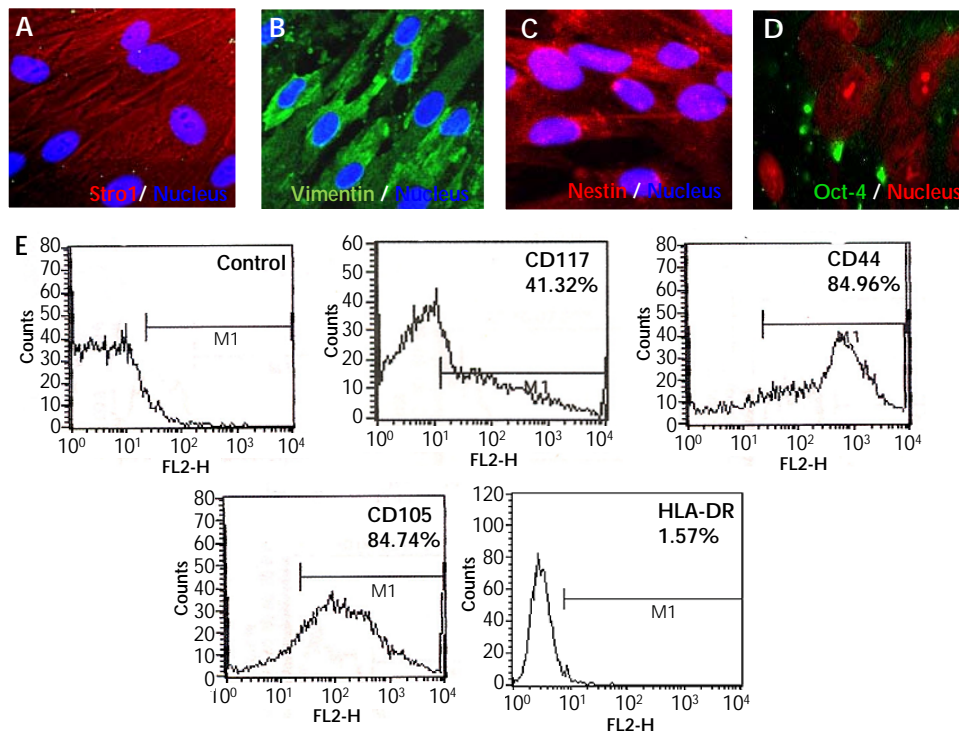


Figure 2. Physical characterization of hPDMSCs. The majority of hPDMSCs obtained from placenta expressed mesenchymal markers such as Stro-1 (A), vimentin (B), and nestin (C) along with the embryonic marker oct-4 (D) by immunocytochemistry. Cell surface analysis of hPDMSCs by FACS revealed homogenous mesenchymal population stained positive for CD44, CD105, and CD117, but negative for HLA-DR (E).

Transplantation of hPDMSCs in diabetic mice under kidney capsule

The obviously diabetic mice (5 mice/group) were anesthetized (ketamine, 150 mg/kg), and xylazine, 10 mg/kg, i.p.), shaved, and cleaned. A small incision was made on the left flank of the mouse and the kidney was exposed. The kidney was kept moist with normal saline swab. Using a sterile surgical blade, a small scratch on the right flank of the kidney was made, creating a nick in the kidney capsule, not too large or too deep. Blood was drawn from tail vein, allowed to clot, and the clot was carefully aspirated off the bottom of a 1.5 ml microcentrifuge tube using a p200 pipette and a straight, thin-wall pipette tip. A blood clot containing the hPDMSCs (1.5×10^5) was slowly delivered under the kidney capsule (animals from this group then called hPDMSCs Tx). The kidney was placed back into the cavity and the peritoneum and skin were sutured using absorbable 6-0 catgut sutures (Stericat Gutstrings, Delhi) and autoclipper (Becton Dickinson, Bedford, USA).

All animals (control and experimental) received an i.p. injection of gentamycin (3 mg/kg body weight), ampicillin and cloxacillin (20 mg/kg body weight), and diclofenac sodium (0.5 mg/kg body weight), for 3 days (starting from the day of operation). Also, they received the topical ointment (Soframycin, Aventis Pharma. Ltd., Pune, India), and were placed in a cage on a heating pad. Animals were administered analgesics (buprenorphine 0.05 mg/kg every 12 h for 3 days). The second group consisted of diabetic control/sham transplanted (sham Tx) animals. They received blood clot only. Non-transplanted diabetic animals were considered as positive control, while non-diabetic untreated animals were considered as untreated control.

Transplantation of ILCs in diabetic mice in biocompatible macrocapsules

For ILC transplantation (ILC Tx) we used another protocol employing an immune isolation device. Animals in this experimental group received

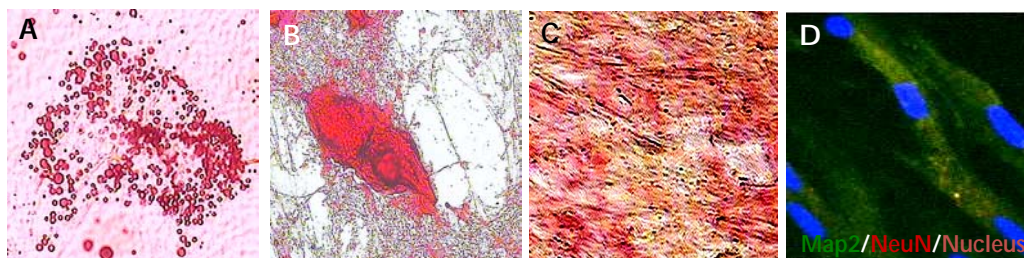


Figure 3. Multilineage differentiation potential of hPDMSCs. The panels display representative photomicrographs of adipocytes detected by Oil Red O staining (A), chondrocytes detected by Safranin-O staining (B), osteoblasts detected by Alizarin Red S staining (C), and neuronal lineage by expression of Map2 and NeuroN (D). Magnification 20x for all images.

approximately 1000 islet equivalent clusters i.p. packed in biocompatible macrocapsules made up of polyurethane-polyvinylpyrrolidone semi-interpenetrating network (PU-PVP semi-IPN). The macrocapsule transplantation protocol was followed as described earlier by our group [27, 28].

A total of five groups, with five animals in each group, was created to study the *in vivo* functionality of hPDMSCs and differentiated ILCs. A biocompatible and immunoisolatory PU-PVP semi-IPN macrocapsule was used to encapsulate the differentiated ILCs to avoid immune rejection. All encapsulation procedures were carried out under strictly aseptic conditions. These capsules were washed thoroughly for 60 days with sterile distilled water followed by PBS (pH 7.2) and DMEM medium washes of 24 h each. For transplantation, around 1000 islet equivalent clusters were suspended in sodium alginate solution (1-2% w/v alginic acid, Sigma Chemical Co., St. Louis, MO, USA; in 0-85% saline) at a ratio of 1000 islets/ml alginate solution. The solution containing ILCs was then transferred into biocompatible capsules, and the open ends of the capsules were sealed using heat. The capsules were then transplanted into the peritoneal cavity of STZ-induced diabetic mice. Animals were fasted overnight and anesthetized by i.p. administration of thiopentalsodium at a dose of 40 mg/kg body weight. About 2 mm long incisions were made in the abdomen, and macrocapsules with or without islets were introduced.

Blood glucose and body weights were monitored for all groups every 48 h (while values for every 7th day have been represented). After 30 days of transplantation, animals from the ILC Tx group and the hPDMSCs Tx group were subjected to intra-peritoneal glucose tolerance test (IPGTT). After 8 h of fasting, mice were injected with 2 g/kg body weight of glucose i.p. Glucose disposal was

analyzed by measuring blood glucose at 0, 15, 30, 45, 60, and 120 min post injection using Accutrend Sensor Comfort blood glucose meter.

Estimation of serum insulin

For serum preparation, blood was collected from all mice groups by retro-orbital bleeding and incubated at 37°C for 30 min. The blood was later centrifuged at high speed; clear serum was collected and stored at -80°C. Human and mouse insulin concentrations were measured (both Merckodia, ultrasensitive human and mouse insulin ELISA kits, Sweden) for all the abovementioned time points according to the manufacturer's instruction. Secreted insulin was quantified using insulin ELISA kits (Merckodia, AB, Sweden).

At the end of the study period (after 30 days), ILC-transplanted PU-PVP semi-IPN macrocapsules and undifferentiated hPDMSCs transplanted kidneys were surgically removed. Kidney grafts were examined by H&E staining and the viability of ILCs packed inside the capsules were checked by trypan blue staining.

Statistical analysis

Values are expressed as mean \pm SEM or median and interquartile range, from at least three different experiments. Experimental groups were compared using Anova or 't' test. Prism 5 (Graphpad Software, San Diego) was used for analysis.

Results

Isolation and expansion of hPDMSCs

The results reported here represent data obtained from the study of 28 (out of 32) successfully isolated human placentas. The isolated cells from

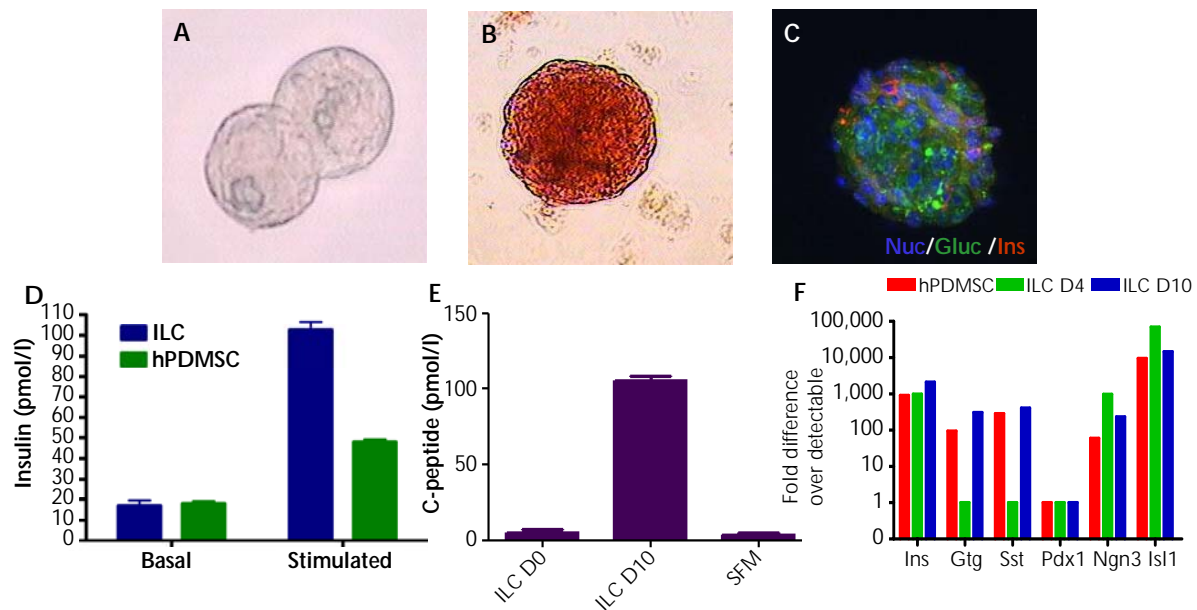


Figure 4. Differentiation of hPDMSCs to pancreatic lineage. hPDMSCs upon exposure to serum free medium (SFM) supplemented with growth factors to induce pancreatic lineage differentiation formed islet-like cell clusters (ILCs) (A). These ILCs were positive for DTZ staining (B), and exhibited the presence of insulin and glucagon by immunocytochemistry (C). Newly generated ILCs showed fivefold increase in insulin secretion upon glucose stimulation. Whereas, undifferentiated hPDMSCs showed a 2.5 fold increase in insulin secretion compared with the basal level (D). C-peptide secretion was observed only in day 10 ILC culture supernatant (E). Real time Taqman-based PCR results showed the abundance of pro-insulin, glucagons (Gtg), somatostatin (Sst), Ngn3, and Isl1 transcripts in undifferentiated hPDMSCs as well as in day 4 and day 10 ILCs (F). Error bars in panel F are not observable as the results showed high reproducibility with little variation.

these placentas at passage 0 represented a mixed population of epithelial and fibroblast-like cells (Figure 1A). Cell colonies from placental tissue began to appear after 7-10 days of cells isolation. After passaging with trypsin, the epithelioid population rapidly disappeared from culture and were no longer apparent by the second passage (Figure 1B). The 100% confluency was reached after 21 to 25 days of culture. In contrast, the fibroblastoid population of cells continued to proliferate, even after 25 passages. After subjecting these cells to different media, optimum growth was obtained in the α -MEM supplemented with 10% hUCBS (Data not shown).

The combined data of the cell count showed that the lag phase of these hPDMSCs lasts for approximately 72 h, leading to 120 h of log phase (Figure 1C). It was observed that hPDMSCs had a doubling time of 21.84 h.

Immunocytochemistry and flow cytometry

The confocal microscopy study showed that hPDMSCs were positive for mesenchymal markers

such as Stro-1 (Figure 2A), vimentin (Figure 2B), nestin (Figure 2C), and embryonic oct-4 (Figure 2D). Flow cytometry analysis of the hPDMSCs showed that they were strongly positive for CD44, CD105, and CD117 (Figure 2E), and negative for CD10, CD34, CD45, and CD166.

Multi-lineage differentiation studies

Human PDMSCs were differentiated into an adipogenic cell type after approximately 21 days of incubation in adipogenic induction medium. The adipocytic phenotype in induced hUCMSCs was signaled by the change in cell morphology from spindle-shaped through round to oval shaped cells, and by the appearance of numerous large, rounded intracytoplasmic lipid droplets. These lipid droplets were stained positive by Oil Red O (Figure 3A).

Subsequently, hPDMSCs differentiated into a chondrogenic cell lineage after 3 weeks of incubation in chondrogenic medium. The chondrogenic phenotype in induced hPDMSCs was signaled by the changes in cell morphology, from spindle-

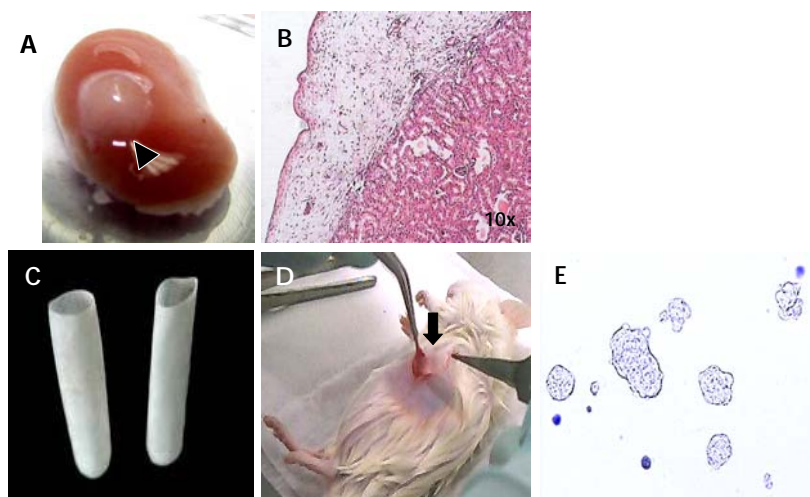


Figure 5. *In vivo* transplantation study. **A:** Kidney capsule showing transplanted hPDMSCs (indicated with arrowhead). **B:** H&E staining of transplanted kidney showed intact mesenchymal layer without neovascularization, indicating graft acceptance. PU-PVP-semi-IPN macrocapsule (**C**) packed with ILCs and transplanted into the peritoneal cavity of experimental diabetic mice (indicated with arrow) (**D**). Trypan blue dye exclusion assay of ILCs 30 days post transplantation showed viable ILCs (**E**).

shaped to larger and rounded cell aggregates, and by the accumulation of sulfated proteoglycans which were present in cartilage. These proteoglycans in the matrix stained positive with Safranin O (Figure 3B).

Upon exposure to osteogenic differentiation medium for three weeks, hPDMSCs showed changes in cell morphology. They changed from fibroblast-like to cuboidal-shaped, as they differentiated and mineralized. Calcium phosphate mineralization, which stained positive by alizarin red S stain, indicated direct evidence of calcium deposits as an amorphous accumulation between cells (Figure 3C) after the third week of osteogenic induction.

When exposed to a neuronal differentiation cocktail medium for 21 days, hPDMSCs changed their morphology to neuronal cell. These cells stained positive for the neuronal markers Map2 and NeuN (Figure 3D).

Differentiation to islets-like clusters and their functional study

The induction of hPDMSCs with serum-free medium containing a cocktail of ITS, nicotine, and taurine has microscopically shown pro-

gressive cell clustering from day 2 onwards. This led to typical ILC formation at the end of day 10 (Figure 4A). hPDMSCs that proliferated as an adherent monolayer aggregated into spherical cell clusters when the medium was changed from serum-containing medium to day 1 SFM (SFM-i). Cellular aggregation occurred as a gradual process, and complete clusters were formed by 24-36 h of incubation in SFM-i. The cells formed tight clusters that resembled pancreatic islets. Henceforth, these clusters were termed ILCs. ILCs gradually matured to pancreatic hormone-expressing cells when exposed to SFM-ii followed by SFM-iii supplemented with beta-cell maturation factors like GLP-1 and nicotinamide (SFM-iii). After

10 days of induction, these mature ILCs stained positive for islet-specific DTZ stain (Figure 4B). DTZ is known to selectively stain pancreatic beta-cells because of its high zinc content; non-islet tissue remained unstained. After 30 days, viable ILCs were found by trypan blue dye exclusion method (Figure 5E). These clusters were also found positive for insulin and glucagon (Figure 4C) by immunocytochemistry. We obtained about 600-650 ILCs from a dish containing 3×10^5 cells. Hence, the efficiency and fraction of hPDMSCs undergoing differentiation ranged between 65-70%, depending on the yield of ILCs. This represents 20-25% beta-cells per islet.

These newly generated ILCs showed insulin secretion upon glucose stimulation. Basal insulin secretion of approximately 15 pmol/l was observed; stimulation insulin secretion was around 100 pmol/l (Figure 4D). Undifferentiated hPDMSCs showed 18 pmol/l insulin secretion at basal glucose level (5.5 mM glucose), and 48 pmol/l for stimulated glucose levels (16.5 mM glucose) (Figure 4D). Also, C-peptide secretions from these ILCs were around 108.54 pmol/l (Figure 4E), and was found negligible for undifferentiated hPDMSCs. The absence of C-peptide release in day 0 supernatant is due to the fact that day 0 PDMSCs represents the

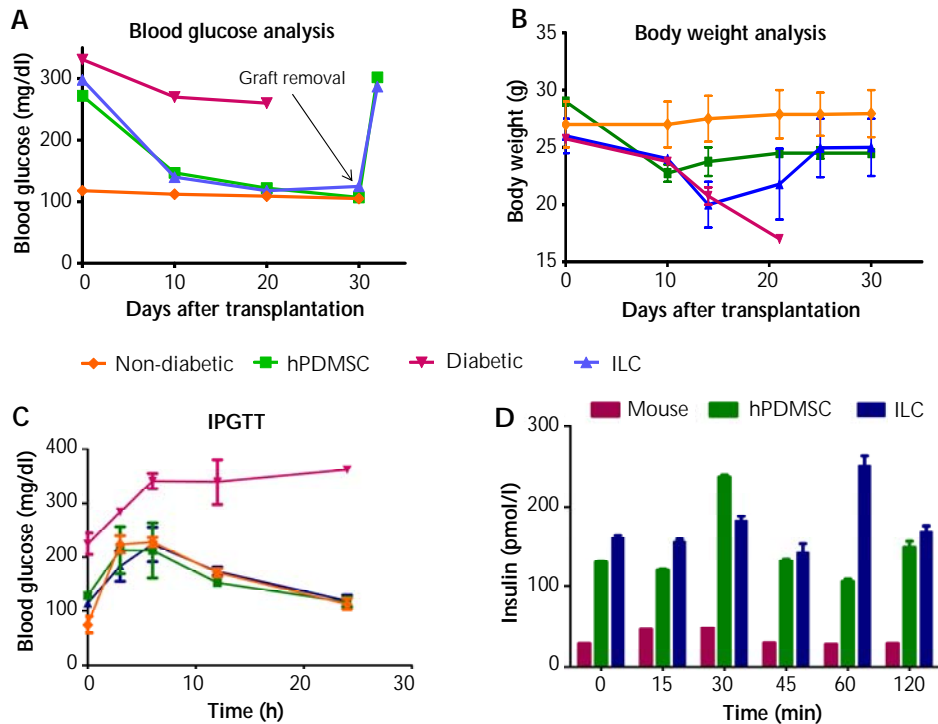


Figure 6. Post-transplantation study. Fasting blood glucose levels indicate that mice in the hPDMSC and ILC transplant group reverted back to normoglycemia (A), with gradual increase in body weight (B). IPGTT showed the standard bell-shaped curve in the hPDMSC and ILC transplant group, similar to the non-diabetic group of mice (C). Human insulin was detected in the blood of mice transplanted with hPDMSCs and ILCs (D).

undifferentiated state. Amylase secretion in day 10 culture supernatant was negligible for differentiated ILCs and for hPDMSCs culture supernatant.

Undifferentiated placental MSCs along with day 4 and day 10 differentiated ILCs were analyzed for the pancreatic hormones and beta-cell development transcription factors by Taqman-based real-time PCR. An abundance of proinsulin, glucagons, and somatostatin in differentiated and undifferentiated ILCs was observed. Day 4 ILCs (i.e. intermediate differentiated cells) did not show the abundance of glucagon and somatostatin, but exhibited an abundance of Ngn3 and Isl1 transcripts. Also, undifferentiated hPDMSCs showed abundance of Ngn3 and Isl1 transcripts, along with ILCs (Figure 4F). This expression indicated their propensity towards islet differentiation. hPDMSCs differentiated and acquired islet-like architecture only at the end of the differentiation process. Insulin secretions from hPDMSCs and ILCs were similar to those obtained after trans-

planting hPDMSCs/ILCs. This feature is important because ILCs generated from hPDMSCs serve the same purpose as hPDMSCs. It suggests that hPDMSCs are an alternative equivalent to ILCs.

Transplanted hPDMSCs/ILCs restored normoglycemia in STZ-induced diabetic mice

Mice transplanted with hPDMSCs and ILCs did not show graft rejection. Diabetic mice without transplantation showed hyperglycemia throughout the study period and died after 20 days of STZ-induced diabetes. Non-transplanted, non-diabetic mice showed normal blood glucose values. Mice transplanted with ILCs or undifferentiated hPDMSCs showed reductions in blood glucose levels, and reversal of experimental diabetes after 15 days. This status was maintained at blood glucose values of less than 140 mg/dl. Diabetic control mice did not restore normoglycemia and died after day 15 of diabetes induction (Figure 6A), with con-



stant loss in body weight. Whereas, increased body weight was observed in ILC Tx, hPDMSC Tx, Sham Tx, and the negative control group (Figure 6B).

Transplanted hPDMSCs/ILCs were responsive to glucose challenge in vivo

The function of implanted ILCs/hPDMSCs was further evaluated by a standard 2-hour IPGTT. The IPGTT of ILC/hPDMSC-transplanted and non-diabetic control group mice ($n = 5$ for all groups) resulted in a typical bell-shaped curve. This means that glucose concentrations were elevated at 15 min, followed by a return to near normal by 90 min, after glucose infusion for plotted time vs. blood glucose (Figure 6C). In contrast, blood glucose concentrations in the diabetes group mice remained elevated throughout the entire study period. Although blood glucose concentrations in ILC/hPDMSC-transplanted mice were elevated initially, as compared to non-diabetic control mice, they displayed a similar glucose tolerance test profile by 90 min of glucose injection. Diabetic animals continued to display elevated glucose concentrations even beyond 120 min. Since all diabetic control mice showed significant signs of morbidity and weight loss (20% of their initial body weight), they had to be euthanized as per the institutional guidelines for care of laboratory animals.

Simultaneous analysis of human and mouse insulin was carried out to understand whether normal circulating glucose was maintained as a result of insulin (human) released from hPDMSCs and ILCs derived from hPDMSCs. We observed detectable levels of human insulin in the blood of hPDMSC- and ILC-transplanted mice. This increased following glucose challenge (Figure 6D). Significant increases in human basal insulin were seen at 30 min in hPDMSC- and at 60 min in ILC-transplanted mice.

To confirm whether normal glucose concentrations observed in transplanted mice were caused by hPDMSCs and ILCs derived from hPDMSCs, we surgically removed the grafted capsules and hPDMSC-grafted kidneys after 8 weeks of STZ injection (12 weeks post-transplant). In the graft-removed animals, hyperglycemia was observed within three days of removal (Figure 6A), and almost all mice (~90%) died within 2 weeks of graft removal.

Histopathology of transplanted kidneys revealed that hPDMSCs were present in the kidney capsule of mice. There were no signs of neovascu-

larization (Figure 5B). The viability of ILCs in the transplanted capsules was checked by trypan blue stain. Most of the ILCs in the capsules were found viable even 30 days after transplantation (Figure 5E).

Discussion

The main focus of our study was to evaluate the potential of culture-expanded undifferentiated hPDMSCs as a novel source of insulin-producing cells. Obtaining adequate numbers of human stem cells has been problematic for several reasons. First, the isolation of normally occurring populations of stem cells in adult tissues has been technically difficult, expensive, and very limited in quantity. Second, procurement of these cells from embryos or fetal tissue, including abortions, has raised ethical and moral concerns. Alternative sources that do not violate the sanctity of independent life are essential for further progress in the clinical use of stem cells. Hence, the search continues for an ethically conducive, easily accessible, and controllable source of stem cells. Placental tissue draws great interest as a source of cells for regenerative medicine because of the phenotypic plasticity of many of the cell types isolated from this tissue.

The placenta is involved in maintaining fetal tolerance. It contains cells that display immunomodulatory properties. This feature could prove useful for future cell therapy-based clinical applications. Placental tissue is readily available and easily procured without invasive procedures. Its use does not elicit ethical debate. Mesenchymal stem cells (MSCs) are multipotent non-hematopoietic progenitor cells that are being explored as a promising new source. Although their immunomodulatory properties are not yet completely understood, their low immunogenic potential together with their effects on immune response make them a promising therapeutic tool for severe refractory autoimmune diseases [29].

In the present study, we have successfully isolated hPDMSCs from human chorionic villi of full term placenta. The chorionic villi of human term placenta are a rich source of mesenchymal stem cells [30]. These hPDMSCs showed typical fibroblast-like appearance, which accords with the observations by Yen *et al.* and Miao *et al.* [11, 12]. Our lab has reported earlier that hUCBS supports attachment, propagation, and differentiation of human bone marrow-derived mesenchymal cells [31], which was further confirmed by Shetty *et al.* [32]. Hence, hPDMSCs supplemented by hUCBS



instead of the fetal calf serum (FCS) showed better proliferation. We deliberately avoided the use of FCS in order to grow the cells in medium free of xenoproteins, and to make them suitable for human transplantation studies. hPDMSCs have been cultured for more than 18 population doublings without any change in morphology, MSC characteristics, and differentiation potential. These isolated hPDMSCs exhibited mesenchymal proteins *stro1*, vimentin, nestin, and surface markers CD44, CD105, CD117, and were negative for CD45, CD34, CD90. These observations confirmed their identity as MSCs. Also, the hPDMSCs weakly expressed the embryonic cell marker *oct-4* [13, 17], indicating their closeness with embryonic stem cells. Presence of embryonic characteristics may be responsible for beta-cell function in hPDMSCs [17].

The isolated hPDMSCs differentiated into various lineages like adipocyte, chondrocyte, osteocyte, and neurons after exposure to lineage-specific differentiation cocktails of differentiating agents, as reported earlier by several groups [5, 8, 10, 11, 13]. Our results documented for the first time that there are transcripts of insulin, glucagon, somatostatin, *Ngn3*, and *Isl1* in undifferentiated hPDMSCs (Figure 4). This is a striking feature of our study. Such transcripts were not detected in undifferentiated MSCs derived from human umbilical cord and amnion [27, 28]. It is well known that only placenta is highly vascularized among the fetal membranes. Whereas, amnion is avascular and umbilical cord Wharton's jelly acts as a matrix to support two arteries and a vein. This anatomical variation makes placenta an endocrine organ compared to other fetal membranes.

The presence of insulin in undifferentiated hPDMSCs could be explained by the insulin gene imprinting reported in yolk sac placenta of rat and human [19, 22, 23]. The closely related peptide insulin and the insulin-like growth factors (IGF)-I and II have been well characterized in a variety of tissues, including human placenta [33]. The placenta expresses high amounts of insulin receptors relative to other tissues in the body [34], facilitating the transport of nutrients to the developing fetus across the placenta. The presence of proinsulin gene in undifferentiated hPDMSCs could be due to the involvement of insulin-like growth factor 2 (IGF2) in embryonic and placental development [35].

Transplanting undifferentiated hPDMSCs under the kidney capsules of STZ-induced diabetic mice, and transplanting biocompatible macrocapsules packed with ILCs in diabetic mice, both re-

sulted in a reduction of hyperglycemia and restoration of normoglycemia, 15 days post transplantation. This was accompanied by increased body weight, indicating signs of diabetes reversal.

In a recent study, Chang *et al.* have demonstrated the differentiation potential of hPDMSCs into insulin-producing cells [17]. The total time needed for differentiation into insulin-producing spheroid bodies was 4 weeks, in presence of serum-free medium containing ITS. In our modified pancreatic lineage differentiation protocol, we have added nicotinamide and GLP1 along with ITS sequentially into serum-free differentiation medium, as detailed in Table 1, and reported previously by us [27, 28]. This procedure resulted in the differentiation of hPDMSCs into islet-like clusters within merely 10 days. Thus, this procedure reduces the time needed for islet differentiation.

The identity of these differentiated ILCs was then confirmed as true islets by DTZ-staining and positive immune-staining for all islet hormones (Figure 4B and 4C). The islets obtained were found to be responsive to glucose challenge, as evidenced by a threefold increase in insulin secretion over basal stimulation (Figure 4D). This indicated that the generated islets were able to synthesize, store, and release insulin in response to glucose.

In the present study, we have used ILCs generated from human tissue. We transplanted these ILCs into mice (xenotransplantation) using biocompatible PU-PVP-semi IPN macrocapsules. There was no graft failure during the study period. Proper glucose sensing and insulin release by the transplanted islets was evidenced by normal IPGTT. This indicated adequate graft functionality upon transplant. Upon retrieval, transplanted islets were in good condition with well-defined morphology retained inside the macrocapsule. In the study by Chang *et al.*, transplantation of spheroid bodies derived from placental MSCs into STZ-induced diabetic mice led to restoration of normoglycemia, while animals transplanted with untransformed, undifferentiated hPDMSCs remained diabetic [17]. This result conflicts with our observations, where both undifferentiated hPDMSCs and differentiated ILCs showed reduction in blood glucose levels with progressive increase in body weight (Figure 6A and 6B). For the transplantation of ILCs, we used an immunoisolation device (Figure 5C) transplanted into the peritoneum of diabetic mice. This novel way of transplanting islets packed into a biocompatible capsule was reported recently by our group [28].



As shown in the present study, reversal of STZ-induced diabetes after transplantation of hPDMSCs, or ILCs, is evidenced by a decrease in hyperglycemia and an increase in body weight. The restoration of normoglycemia observed in these mice could be attributed to insulin secretion by the transplanted hPDMSCs or ILCs, since graft removal led to recurrence of hyperglycemia. Moreover, estimated serum insulin of transplanted mice clearly showed an increase in the level of human insulin in mouse serum. The level of mouse insulin observed in these mice was negligible, suggesting that endogenous pancreas regeneration did not occur. The maintenance of glucose homeostasis in these mice affirms our hypothesis that transplanted hPDMSCs or ILCs are capable of insulin production in response to glucose. It also supports our hypothesis that hPDMSCs are capable of insulin secretion due to insulin gene imprinting.

As expected, we did not observe regeneration of mouse pancreas. This was due to the transplantation of undifferentiated hPDMSCs under the kidney capsule to act as surrogate beta-cells, and to satisfy the insulin requirement. However, MSCs have already been co-transplanted systemically with islets through the tail vein, and features of regeneration, neovascularization, and immunomodulation have been observed [36, 37]. Therefore, it would be very interesting to explore whether systemic administration of hPDMSCs could reverse experimental diabetes through endogenous pancreatic beta-cell regeneration. Previously, we have reported that multiple injections of bone marrow could reverse experimental diabetes in mice by inducing pancreatic regeneration [38]. Additional studies involving systemic injections of hPDMSCs via the tail vein in diabetic mice could clarify the role and mechanism of action caused by hPDMSCs.

Transplantation of undifferentiated hPDMSCs, or newly formed ILCs, into STZ-induced diabetic mice were safe. Undifferentiated hPDMSCs did not show signs of immune rejection, as evidenced by graft maintenance. This was further affirmed by the lack of HLA-DR markers on their cell surface (Figure 2E). Also, the cells did not cause teratoma formation upon xenotransplantation [39].

Our data confirms earlier findings of insulin gene expression and release by rat yolk sac [23]. In the study by Giddings and Carnaghi, insulin mRNA was present in extra-placental membranes before pancreatic differentiation [23]. Their study also showed that membrane fragments, main-

tained in culture, produced approximately 10 ng of radio-immunoassayable insulin/mg membrane protein/day. Over a 4-day period, approximately 50 times more insulin accumulated in medium than that present in membranes at the time of isolation. In the light of this finding, our study indicates that human placental mesenchymal stem cells are a promising source for insulin-producing cells.

In our study, reversal of experimental diabetes through ILC or hPDMSC transplant was also confirmed by IPGTT performed on normoglycemic mice. Simultaneous analysis of human and mouse insulin was carried out to understand whether normoglycemia was restored as a result of human insulin released from grafted ILCs. It showed that human insulin was detectable, and increased following glucose challenge in ILC transplanted mice (Figure 6D). Increased fasting and glucose-stimulated serum levels of human insulin at 30 min, indicated that the implanted ILCs synthesized, stored, and secreted insulin in response to both fasting-induced hypoglycemia and glucose challenge. To find out whether normal glucose concentrations observed in transplanted mice were due to ILC graft, we surgically removed the grafted capsules after 8 wk of STZ injection (12 wk post-transplant). Mice reverted to hyperglycemia within three days of graft removal (Figure 6A), and almost all mice (~90%) died 2 weeks later.

Earlier studies with undifferentiated placenta-derived MSCs from umbilical cord and amniotic membrane did not show production and secretion of insulin. As transplants, they were unable to reverse STZ-induced diabetes [27, 28]. Presently, human bone marrow-derived mesenchymal stem cells are applied in human clinical trials, and their use is advocated for allogeneic stem cell therapy. However, our study shows that hPDMSCs offer a worthy alternative.

Conclusion

The present study shows that placenta-derived mesenchymal stem cells can be easily isolated and expanded in medium supplemented with hUCBS, without alterations in morphological and functional characteristics. Due to the easy accessibility, lack of ethical concerns, and abundant availability, hPDMSCs may well be an attractive, alternative source of progenitor/stem cells for basic or translational research.

Our data confirms that hPDMSCs are able to differentiate into islets that can secrete insulin in



response to glucose *in vitro* and *in vivo*. The transplantation of culture-expanded, undifferentiated hPDMSCs in experimental diabetic mice reversed hyperglycemia. Thus, these cells offer another non-pancreatic, readily available, noninvasive, and inexhaustible source of allogeneic stem cells for cell replacement therapy in diabetes.

Acknowledgements: The authors wish to thank Dr. Meeta Nakhare, Ratna Memorial Hospital, for placenta samples. We are also grateful to the Department of Biotechnology, Government of India, for financial support to the project, and for the research fellowship to Sachin Kadam. Special thanks are to Mr. Swapnil Walke and Mrs. Ashwini Atre for FACS and confocal analysis, respectively.

Financial funding: This work was funded by the Department of Biotechnology, Govt. of India, under the re-

search project 'Harnessing the potential of human adult stem cells' granted to the National Centre for Cell Science, Pune, India where the present work was carried out.

Statements on author contribution: RRB: concept and design, experimental plan, academic support, administrative support, provision of study material, and final approval of manuscript. SK: concept and design, all bench work, animal surgeries, collection and assembly of data, data analysis and interpretation, and manuscript writing. SM: synthesis, preparation and sterilization of biocompatible macrocapsules. PDN: concept of immune isolation, design and characterization of biocompatible macrocapsules, and making available for experimental work.

Disclosures (conflict of interests statement): The authors report no conflict of interests.

■ References

- Zimmet P, Alberti KG, Shaw J. Global and societal implications of the diabetes epidemic. *Nature* 2001. 414(6865):782-787.
- Wild S, Roglic G, Green A, Sicree R, King H. Global prevalence of diabetes: estimates for the year 2000 and projections for 2030. *Diabetes Care* 2004. 27(5):1047-1053.
- Shi Y. Generation of functional insulin-producing cells from human embryonic stem cells *in vitro*. *Methods Mol Biol* 2010. 636:79-85.
- Barcena A, Muench MO, Kapidzic M, Fisher SJ. A new role for the human placenta as a hematopoietic site throughout gestation. *Reprod Sci* 2009. 16(2):178-187.
- Matikainen T, Laine J. Placenta - an alternative source of stem cells. *Toxicol Appl Pharmacol* 2005. 207(2 Suppl):S544-S549.
- Fukuchi Y, Nakajima H, Sugiyama D, Hirose I, Kitamura T, Tsuji K. Human placenta-derived cells have mesenchymal stem/progenitor cell potential. *Stem Cells* 2004. 22(5):649-658.
- Zhang X, Mitsuru A, Igura K, Takahashi K, Ichinose S, Yamaguchi S, Takahashi TA. Mesenchymal progenitor cells derived from chorionic villi of human placenta for cartilage tissue engineering. *Biochem Biophys Res Commun* 2006. 340(3):944-952.
- Strakova Z, Livak M, Krezalek M, Ihnatovych I. Multipotent properties of myofibroblast cells derived from human placenta. *Cell Tissue Res* 2008. 332(3):479-488.
- Wei B, Yuan S, Gao Y, Bing L. Hematopoietic potential of mouse placenta with the application of placenta flushing. *Biol Res* 2008. 41(3):261-270.
- Alvarez-Silva M, Belo-Diabangouaya P, Salaün J, Dieterlen-Lievre F. Mouse placenta is a major hematopoietic organ. *Development* 2003. 130(22):5437-5444.
- Yen BL, Huang HI, Chien CC, Jui HY, Ko BS, Yao M, Shun CT, Yen ML, Lee MC, Chen YC. Isolation of multipotent cells from human term placenta. *Stem Cells* 2005. 23(1):3-9.
- Miao Z, Jin J, Chen L, Zhu J, Huang W, Zhao J, Qian H, Zhang X. Isolation of mesenchymal stem cells from human placenta: Comparison with human bone marrow mesenchymal stem cells. *Cell Biol Int* 2006. 30(9):681-687.
- Parolini O, Alviano F, Bagnara GP, Bilic G, Bühring HJ, Evangelista M, Hennerbichler S, Liu B, Magatti M, Mao N, et al. Concise review: isolation and characterization of cells from human term placenta: outcome of the First International Workshop on Placenta Derived Stem Cells. *Stem Cells* 2008. 26(2):300-311.
- Huang HI. Isolation of human placenta-derived multipotent cells and *in vitro* differentiation into hepatocyte-like cells. *Curr Protoc Stem Cell Biol* 2007. Chapter 1:Unit 1E.
- Chien CC, Yen BL, Lee FK, Lai TH, Chen YC, Chan SH, Huang HI. *In vitro* differentiation of human placenta-derived multipotent cells into hepatocyte-like cells. *Stem Cells* 2006. 24(7):1759-1768.
- Portmann-Lanz CB, Schoeberlein A, Portmann R, Mohr S, Rollini P, Sager R, Surbek DV. Turning placenta into brain: placental mesenchymal stem cells differentiate into neurons and oligodendrocytes. *Am J Obstet Gynecol* 2010. 202(3):294.
- Chang CM, Kao CL, Chang YL, Yang MJ, Chen YC, Sung BL, Tsai TH, Chao KC, Chiou SH, Ku HH. Placenta-derived multipotent stem cells induced to differentiate into insulin-positive cells. *Biochem Biophys Res Commun* 2007. 357(2):414-420.
- Sun NZ, Ji HS. *In vitro* differentiation of human placenta-derived adherent cells into insulin-producing cells. *J Int Med Res* 2009. 37(2):400-406.
- Ager E, Suzuki S, Pask A, Shaw G, Ishino F, Renfree MB. Insulin is imprinted in the placenta of the marsupial, *Macropus eugenii*. *Dev Biol* 2007. 309(2):317-328.
- Muglia L, Locker J. Extraplacental insulin gene expression in the fetal rat. *Proc Natl Acad Sci USA* 1984. 81(12):3635-3639.
- Rau K, Muglia L, Locker J. Insulin-gene expression in extra fetal membranes of rats. *Diabetes* 1989. 38(1):39-43.
- Moore GE, Abu-Amero SN, Bell G, Wakeling EL, Kingsnorth A, Stanier P, Jauniaux E, Bennett ST. Evidence that insulin is imprinted in the human yolk sac. *Diabetes* 2001. 50(1):199-203.



23. **Giddings SJ, Carnaghi L.** Rat insulin II gene expression by extraplacental membranes. A non-pancreatic source for fetal insulin. *J Biol Chem* 1989. 264(16):9462-9469.
24. **Deltour L, Vandamme J, Jouvenot Y, Duville B, Kelemen K, Schaerly P, Jami J, Paldi A.** Differential expression and imprinting status of Ins1 and Ins2 genes in extraembryonic tissues of laboratory mice. *Gene Expr Patterns* 2004. 5:297-300.
25. **Freyer C, Renfree MB.** The mammalian yolk sac placenta. *J Exp Zool B Mol Dev Evol* 2009. 312(6):545-554.
26. **Zhang Y, Li CD, Jiang XX, Li HL, Tang PH, Mao N.** Comparison of mesenchymal stem cells from human placenta and bone marrow. *Chin Med J (Engl)* 2004. 117(6):882-887.
27. **Kadam SS, Bhonde RR.** Islet neogenesis from the constitutively nestin expressing human umbilical cord matrix derived mesenchymal stem cells. *Islets* 2010. 2(2): 112-120.
28. **Kadam S, Muthyala S, Nair P, Bhonde R.** Reversal of experimental diabetes in mice by transplantation of neo-islets generated from human amnion derived mesenchymal stem cells using immunoisolatory macrocapsules. *Cytotherapy* 2010. In press.
29. **Vija L, Farge D, Gautier JF, Vexiau P, Dumitrache C, Bourgarit A, Verrecchia F, Larghero J.** Mesenchymal stem cells: stem cell therapy perspectives for type 1 diabetes. *Diabetes Metab* 2009. 35(2):85-93.
30. **Castrechini NM, Murthi P, Gude NM, Erwich JJ, Gronthos S, Zannettino A, Brennecke SP, Kalionis B.** Mesenchymal stem cells in human placental chorionic villi reside in a vascular niche. *Placenta* 2010. 31(3):203-212.
31. **Phadnis SM, Joglekar MV, Venkateshan V, Ghaskadbi SM, Hardikar AA, Bhonde RR.** Human umbilical cord blood serum promotes growth, proliferation, as well as differentiation of human bone marrow-derived progenitor cells. *In Vitro Cell Dev Biol Anim* 2006. 42(10):283-286.
32. **Shetty P, Bharucha K, Tanavde V.** Human umbilical cord blood serum can replace fetal bovine serum in the culture of mesenchymal stem cells. *Cell Biol Int* 2007. 31(3):293-298.
33. **Bhaumick B, Danilkewich AD, Bala RM.** Altered placental insulin and insulin-like growth factor-I receptors in diabetes. *Life Sci* 1988. 42(17):1603-1614.
34. **Desoye G, Hauguel-De Mouzon S.** The human placenta in gestational diabetes mellitus: the insulin and cytokine network. *Diabetes Care* 2007. 30(Suppl 2):S120-S126.
35. **Han VK, Carter AM.** Spatial and temporal patterns of expression of messenger RNA for insulin-like growth factors and their binding proteins in the placenta of man and laboratory animals. *Placenta* 2000. 21:289-305.
36. **Fotino C, Ricordi C, Lauriola V, Alejandro R, Pileggi A.** Bone marrow-derived stem cell transplantation for the treatment of insulin-dependent diabetes. *Rev Diabet Stud* 2010. 7(2):144-157. This issue.
37. **Sordi V, Piemonti L.** Mesenchymal stem cells as feeder cells for pancreatic islet transplants. *Rev Diabet Stud* 2010. 7(2):132-143. This issue.
38. **Banerjee M, Kumar A, Bhonde RR.** Reversal of experimental diabetes by multiple bone marrow transplantation. *Biochem Biophys Res Commun* 2005. 328(1):318-325.
39. **Soon-Shiong P, Feldman E, Nelson R, Heintz R, Yao Q, Yao Z, Zheng T, Merideth N, Skjak-Braek G, Espevik T, et al.** Long-term reversal of diabetes by the injection of immunoprotected islets. *Proc Natl Acad Sci USA* 1993. 90(12):5843-5847.